



**Highland
Valley
Supply**

Electrical
Conduit &
Fittings
Catalog



HIGHLAND VALLEY SUPPLY, INC
STANDARD TERMS AND CONDITONS OF SALE

Payment Terms: Payment terms are printed on every invoice. Invoices not paid in full by the net due date are subject to a finance charge of 1% per month.

Minimum Order: A minimum order of \$50.00 shall apply

Order Additions & Cancellations: Due to Highland Valley Supply Inc. order processing procedures, product cannot be added to orders that have already been processed. If an addition is needed, another order, subject to all terms and conditions of sale, must be submitted. Highland Valley Supply, Inc. will make every effort to cancel an order, but we cannot guarantee the cancellation of an order. Any order refused due to cancellation will be subject to restocking charges. Certain products are not cancellable or returnable and the full order amount shall be invoiced and collected.

Freight: Unless otherwise noted, fittings orders totaling more than \$750 shall be shipped Freight Allowed to a single destination. Pipe orders may be subject to the addition of freight charges, contact your sales representative for more details.

Orders totaling less than \$750 shall be shipped Prepaid and freight charges will be added to your invoice

Returned Goods: Products presented for return and credit must have prior written approval, be in their original packaging and condition, and may be subject to a restocking charge of up to 30%. Certain products are not returnable.

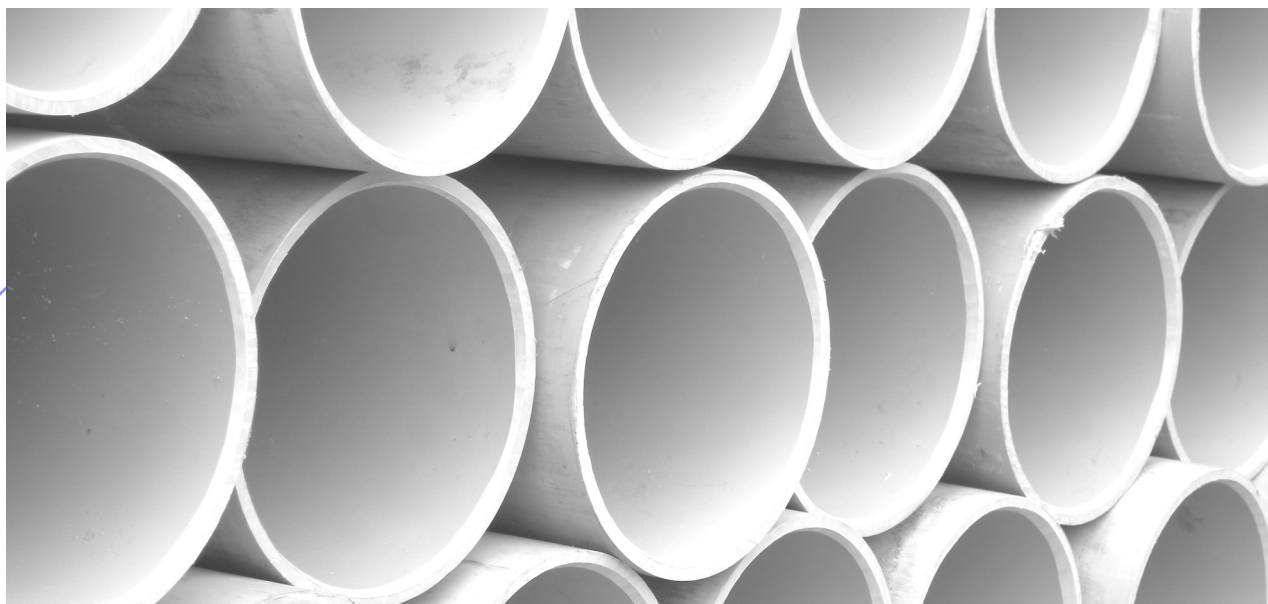
Custom Orders: Custom fabricated products are not cancellable or returnable

Shortage or Damage Claims: Claims for shortages or damaged product must be presented in writing to our office within 24 hours of receipt of product for shortage. Claims for pricing discrepancies must be presented within 3 days of invoice date.

Table of Contents

Schedule 40 Conduit	4
Schedule 80 Conduit	5
TC-6 Conduit	6
TC-8 Conduit	7
Couplings & Adapters	8
Conduit Bodies	9
Exposed Outlet Boxes	10
Weatherproof Covers	11
Floor Box	12
Expansion Joints	13
Bushings, Offsets, & Box Adapters	14
Junction Boxes	15
End Bells, Service, & End Caps	16
Pipe Straps, Plugs, & Spacers	17
Standard Radius Bends	18
Special Radius Bends	20
Cement & Primer	22

Schedule 40 Conduit

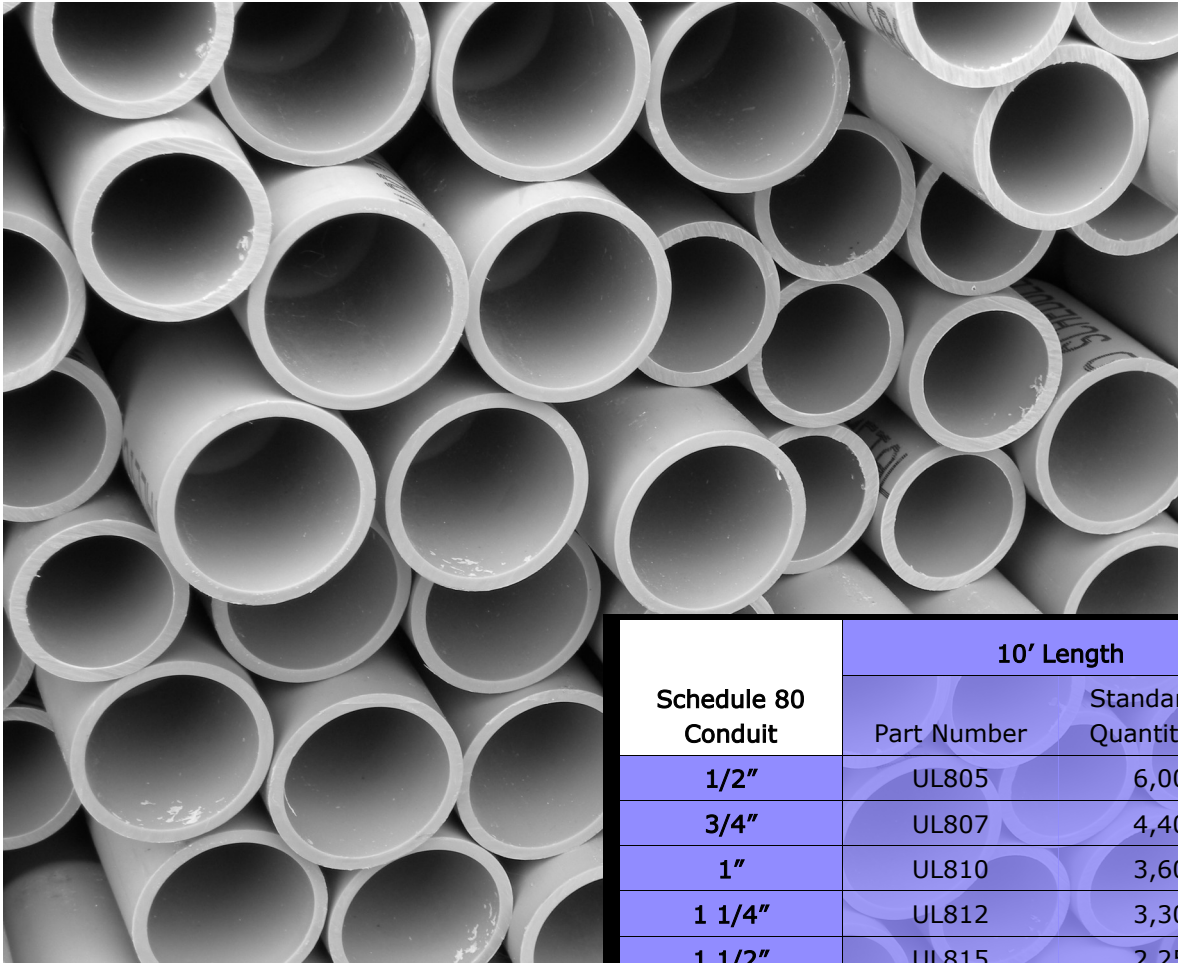


Schedule 40 Conduit	10' Length		20' Length	
	Part Number	Standard Lift Quantity (Ft)	Part Number	Standard Lift Quantity (Ft)
1/2"	UL05	6,000	UL05-20	12,000
3/4"	UL07	4,400	UL07-20	8,800
1"	UL10	3,600	UL10-20	7,200
1 1/4"	UL12	3,300	UL12-20	6,600
1 1/2"	UL15	2,250	UL15-20	4,500
2"	UL20	1,400	UL20-20	2,800
2 1/2"	UL25	930	UL25-20	1,860
3"	UL30	880	UL30-20	1,760
3 1/2"	UL35	630	UL35-20	1,260
4"	UL40	570	UL40-20	1,140
5"	UL50	380	UL50-20	760
6"	UL60	260	UL60-20	520

(877) 803-1478



Schedule 80 Conduit



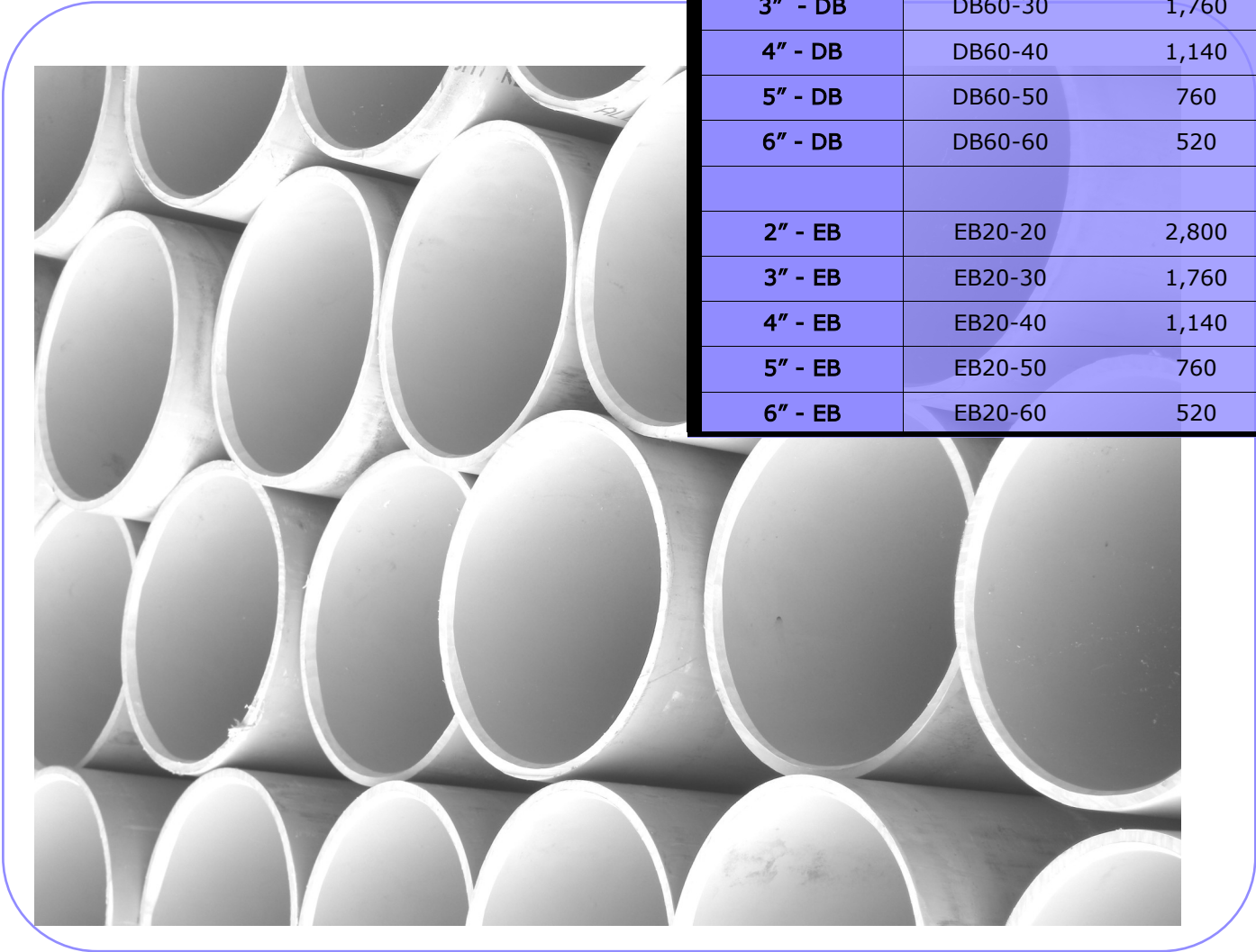
Schedule 80 Conduit	10' Length	
	Part Number	Standard Lift Quantity (Ft)
1/2"	UL805	6,000
3/4"	UL807	4,400
1"	UL810	3,600
1 1/4"	UL812	3,300
1 1/2"	UL815	2,250
2"	UL820	1,400
2 1/2"	UL825	930
3"	UL830	880
4"	UL840	570
5"	UL850	380
6"	UL860	260

(877) 803-1478



TC-6 Conduit—Direct (DB) and Encased Burial (EB)

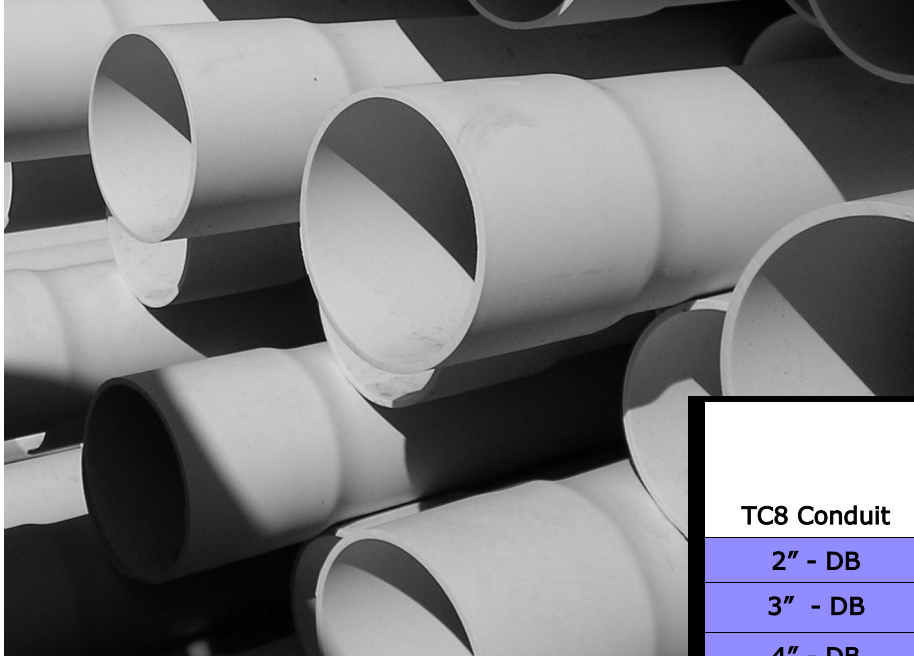
TC6 Conduit	20' Length	
	Part Number	Standard Lift Quantity (Ft)
2" - DB	DB60-20	2,800
3" - DB	DB60-30	1,760
4" - DB	DB60-40	1,140
5" - DB	DB60-50	760
6" - DB	DB60-60	520
2" - EB	EB20-20	2,800
3" - EB	EB20-30	1,760
4" - EB	EB20-40	1,140
5" - EB	EB20-50	760
6" - EB	EB20-60	520



(877) 803-1478



TC-8 Conduit—Direct (DB) and Encased Burial (EB)



TC8 Conduit	20' Length	
	Part Number	Standard Lift Quantity (Ft)
2" - DB	DB120-20	2,800
3" - DB	DB120-30	1,760
4" - DB	DB120-40	1,140
5" - DB	DB120-50	760
6" - DB	DB120-60	520
2" - EB	EB35-20	2,800
3" - EB	EB35-30	1,760
4" - EB	EB35-40	1,140
5" - EB	EB35-50	760
6" - EB	EB35-60	520

(877) 803-1478



Couplings & Adapters

Couplings & Adapters

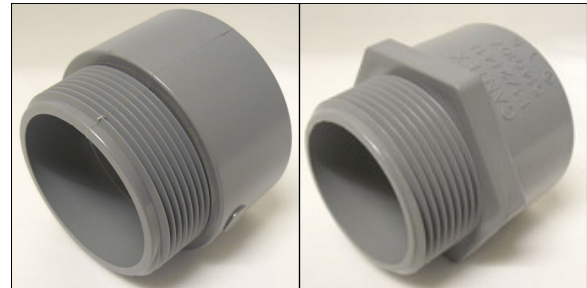
Couplings— Connectors used to join lengths of conduit. Molded with a center stop

Female Adapters—Connectors used to join lengths of PVC to steel threaded conduit

Terminal Adapters— Connectors used to join PVC Conduit to threaded fittings or to boxes

Molded Stop Couplings	Part Number	Standard Box Quantity
1/2"	CP05	200
3/4"	CP07	125
1"	CP10	70
1 1/4"	CP12	40
1 1/2"	CP15	30
2"	CP20	40
2 1/2"	CP25	20
3"	CP30	40
3 1/2"	CP35	30
4"	CP40	20
5"	CP50	10
6"	CP60	8

Female Adapters	Part Number	Standard Box Quantity
1/2"	FA05	200
3/4"	FA07	125
1"	FA10	70
1 1/4"	FA12	40
1 1/2"	FA15	30
2"	FA20	40
2 1/2"	FA25	20
3"	FA30	40
3 1/2"	FA35	30
4"	FA40	20
5"	FA50	10
6"	FA60	8



Terminal Adapters	Part Number	Standard Box Quantity
1/2"	TA05	200
3/4"	TA07	125
1"	TA10	70
1 1/4"	TA12	40
1 1/2"	TA15	30
2"	TA20	40
2 1/2"	TA25	20
3"	TA30	40
3 1/2"	TA35	30
4"	TA40	20
5"	TA50	10
6"	TA60	8

(877) 803-1478



Box quantities subject to change

Conduit Bodies



Type T

Size	Type T Part	Standard Box Quantity
1/2"	T05	25
3/4"	T07	15
1"	T10	10
1 1/4"	T12	10
1 1/2"	T15	10
2"	T20	5
2 1/2"	T25	2
3"	T30	2
3 1/2"	T35	1
4"	T40	1

Conduit Bodies

Conduit Bodies are used to change direction of a conduit run. Conduit Bodies come with a removable cover, gasket and screws.

Conduit Bodies						
	Standard Box Quantity	Type LB Part Number	Type LR Part Number	Type LL Part Number	Type C Part Number	Type E Part Number
1/2"	25	LB05	LR05	LL05	C05	E05
3/4"	15	LB07	LR07	LL07	C07	E07
1"	10	LB10	LR10	LL10	C10	E10
1 1/4"	10	LB12	LR12	LL12	C12	E12
1 1/2"	10	LB15	LR15	LL15	C15	E15
2"	5	LB20	LR20	LL20	C20	E20
2 1/2"	5	LB25	LR25	LL25	C25	E25
3"	5	LB30	LR30	LL30	C30	E30
3 1/2"	4	LB35	LR35	LL35	C35	E35
4"	4	LB40	LR40	LL40	C40	E40

(877) 803-1478



Box quantities subject to change

Exposed Outlet Boxes



FD Blank	Standard Box Quantity
FD*	10

Exposed Outlet Boxes
 Exposed outlet boxes are used for conduit termination box, wire splices and two single gang electrical devices. Uses two gang device covers.

Single Gang Boxes					
	Standard Box Quantity	Type FSE Part Number	Type FSC Part Number	Type FSS Part Number	Type FSCC Part Number
1/2"	10	FSE05	FSC05	FSS05	FSCC05
3/4"	10	FSE07	FSC07	FSS07	FSCC07
1"	10	FSE10	FSC10	FSS10	FSCC10

Two Gang Boxes					
	Standard Box Quantity	Type FSE Part Number	Type FSC Part Number	Type FSS Part Number	Type FSCC Part Number
1/2"	5	FSE-2-05	FSC-2-05	FSS-2-05	FSCC-2-05
3/4"	5	FSE-2-07	FSC-2-07	FSS-2-07	FSCC-2-07
1"	5	FSE-2-10	FSC-2-10	FSS-2-10	FSCC-2-10

(877) 803-1478



Box quantities subject to change

Weatherproof Covers



Weatherproof Covers
Covers for single and double gang exposed outlet boxes

Blank Covers	Part Number	Standard Box Quantity
Single	FSKIT	50
Double	BRC20-2-U	25

Single Gang	Description	Part Number	Standard Box Quantity
	Duplex Receptacle	WDR15/10	10
	Switch	WTG15/10	10
	Toggle Switch	VSC15/10	10
	Plunger Switch	VPT15/10	10
	15A Single	WTL15	10
	20A Single	WTL20	10
	30A Single	WTL30	10
	50A Single	WTL50	10
	In Use Kit 2 1/4" Depth	5133692	6
	In Use Kit 3 1/8" Depth	5133694	6

Double Gang	Description	Part Number	Standard Box Quantity
	Double Duplex Receptacle	VSDD20-2	10
	Double Toggle Switch	VSC20-2	10
	GFI & Toggle Switch	5133345	10
	Duplex Receptacle & Toggle Switch	5133337	10
	In Use Kit 2 1/4" Depth	5133693	6

(877) 803-1478



Box quantities subject to change

Floor Box

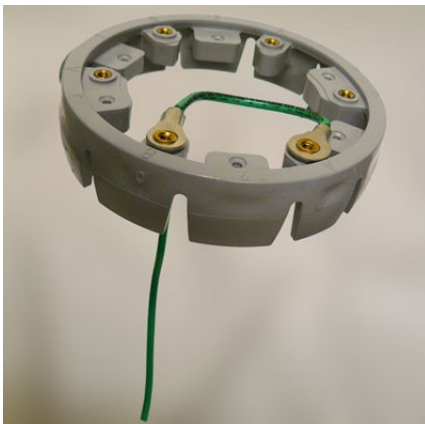


Floor Box

A cylindrical enclosure with four conduit hubs designed to be embedded in a concrete floor with some excess length remaining above the plane of the floor. Excess is trimmed flush with the concrete.

Sold as a kit with one leveling ring, 4 blank hubs (stoppers), 4 reducing bushings and one polyethylene temporary pour lid.

Part Number	Description
FB	Floor Box Kit with 4 3/4" Hubs
FB2	Floor Box Kit with 2 3/4" Hubs & 2 1" Hubs
AFMC	Bronze Duplex Cover for use with Floor Box
FBRING	Floor Box Leveling Ring



(877) 803-1478



Box quantities subject to change

Expansion Joints



Two Piece Expansion Joints

Two Piece Expansion Joint	Part Number	Standard Box Quantity
1/2"	EJ05	25
3/4"	EJ07	10
1"	EJ10	10
1 1/4"	EJ12	5
1 1/2"	EJ15	5
2"	EJ20	25
2 1/2"	EJ25	12
3"	EJ30	12
3 1/2"	EJ35	6
4"	EJ40	6
5"	EJ50	1
6"	EJ60	1

Slip Meter Riser	Part Number	Standard Box Quantity
2"	SMR20TA	1
2 1/2"	SMR25TA	1
3"	SMR30TA	1
4"	SMR40TA	1



Slip Meter Riser

(877) 803-1478

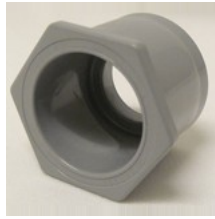


Box quantities subject to change

Bushings, Offsets, & Box Adapters



Reducer Bushing Size	Part Number	Standard Box Quantity
3/4" x 1/2"	MR0705	100
1" x 3/4"	MR1007	100
1 1/4" x 1"	MR1210	50
1 1/2" x 1 1/4"	MR1512	50
2" x 1 1/2"	MR2015	25
2 1/2" x 2"	MR2520	25
3" x 2"	MR3020	25
3" x 2 1/2"	MR3025	25
4" x 3"	MR4030	20
4" x 3 1/2"	MR4035	20



Reducer Bushings

A bushing designed to fit into a bell end or female fitting to reduce from one diameter to the next smaller conduit diameter.



Meter Offset

Used to connect a conduit to a meter box. The offset is needed to move the path of the conduit away from a wall into the holes in the box or meter box

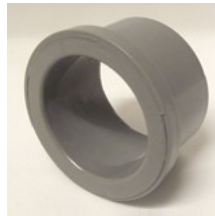
Meter Offset Size	Part	Standard Box
1 1/4"	MO12	15
2"	MO20	8

Pull Elbow

Used to effect a sharp 90° turn in conduit where wires must be continuously pulled around the turn. Provides a smooth surface that will not damage wiring.



Pull Elbow Size	Part Number	Standard Box Quantity
3/4"	PE07	75
1"	PE10	50



Junction Box Adapter

Adapter used with the hub inside a box or enclosure. The cylinder protrudes through a hole in the box wall and is solvent welded to a female fitting outside the box or enclosure.

Box Adapter Size	Part Number	Standard Box Quantity
1/2"	JB05	100
3/4"	JB07	100
1"	JB10	100
1 1/4"	JB12	50
1 1/2"	JB15	50
2"	JB20	25
2 1/2"	JB25	10
3"	JB30	10
3 1/2"	JB35	10
4"	JB40	10

(877) 803-1478



Box quantities subject to change

Junction Boxes



Junction Boxes

A surface mounted enclosure without entrance hubs which allows multiple conduits to be connected and wire splices made within. Appropriate round hole for conduit entrance must be cut. Male adapters or box adapters may be used to secure conduits to the box.

May be concrete encased or buried but not warranted or listed to be watertight for all circumstances.

Square Junction Boxes	Part Number	Standard Box Quantity
4" x 4" x 2"	JB442	10
4" x 4" x 4"	JB444	10
4" x 4" x 6"	JB446	10
5" x 5" x 2"	JB552	10
6" x 6" x 4"	JB664	10
6" x 6" x 6"	JB666	5
8" x 8" x 4"	JB884	5
8" x 8" x 6"	JB886	4
8" x 8" x 7"	JB887	4
12" x 12" x 4"	JB12124	2
12" x 12" x 6"	JB12126	2



Round Junction Box—

A 4" round enclosure with four entrance hubs which is surface mounted to a wall or ceiling. Used to terminate a conduit un or join two to four conduits at a common point and to allow space for wire splices. Four screws secure a blank cover and gasket to the box.

Part Number	JBROUND
-------------	---------

Custom Sizes can be fabricated to order!

(877) 803-1478



End Bells, Service, & End Caps

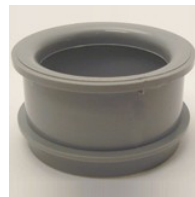


Service Caps	Part Number	Standard Box Quantity
1/2"	MH05	10
3/4"	MH07	10
1"	MH10	20
1 1/4"	MH12	20
1 1/2"	MH15	20
2"	MH20	5
2 1/2"	MH25	5
3"	MH30	5
3 1/2"	MH35	5
4"	MH40	1

End Bells

Used in concrete vault walls to provide a smooth, safe entrance to the conduit outside.

Protects wiring which is being pulled through the vault wall.



End Bell	Part Number	Standard Box Quantity
1/2"	MEB05	100
3/4"	MEB07	100
1"	MEB10	50
1 1/4"	MEB12	50
1 1/2"	MEB15	50
2"	MEB20	40
2 1/2"	MEB25	30
3"	MEB30	50
3 1/2"	MEB35	50
4"	MEB40	50
5"	MEB50	25
6"	MEB60	15

Service Entrance Caps

Installed on a vertical conduit, usually outdoors, to receive open wires from an electrical service line while preventing rainwater from entering the conduit.



End Caps	Part Number	Standard Box Quantity
1/2"	EC05	100
3/4"	EC07	100
1"	EC10	50
1 1/4"	EC12	25
1 1/2"	EC15	25
2"	EC20	100
2 1/2"	EC25	60
3"	EC30	60
3 1/2"	EC35	25
4"	EC40	30
5"	EC50	15
6"	EC60	10



End Caps

Can be cemented in place to permanently cap the end of conduit

(877) 803-1478



Box quantities subject to change

Pipe Straps, Plugs, & Spacers



Pipe Straps	Part Number	Standard Box Quantity
1/2"	PS05	300
3/4"	PS07	200
1"	PS10	200
1 1/4"	PS12	200
1 1/2"	PS15	200
2"	PS20	200
2 1/2"	PS25	100
3"	PS30	100
3 1/2"	PS35	100
4"	PS40	100

Tapered Plugs
Used to temporarily plug the end of conduit. Plugs have an integrated rope tab.

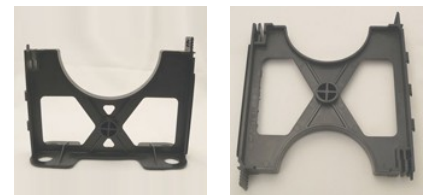


Tapered	Part	Standard Box
1/2"	TP05	100
3/4"	TP07	100
1"	TP10	100
1 1/4"	TP12	100
1 1/2"	TP15	100
2"	TP20	100
2 1/2"	TP25	100
3"	TP30	80
4"	TP40	50
5"	TP50	40
6"	TP60	30

Pipe Straps
A u-shaped conduit support device used to anchor conduit to interior or exterior surfaces. Two holes in the feet of the strap allow mounting with screws or nails.



Conduit Spacers
Provides consistent spacing for conduit in trenches or other encased areas



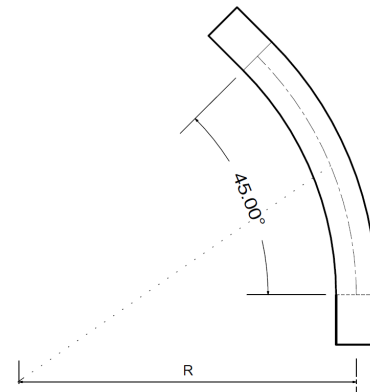
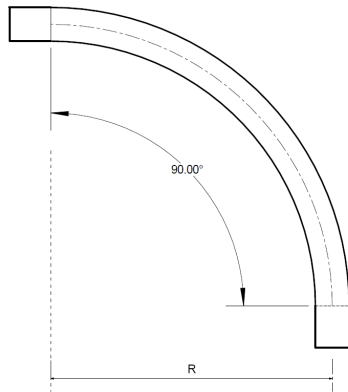
Conduit Spacers Conduit Size	Base		Intermediate	
	Part Number	Standard Box Quantity	Part Number	Standard Box Quantity
3" x 3"	BAS330	190	INT330	160
4" x 1"	BAS410	270	INT410	270
4" x 1 1/2"	BAS415	190	INT415	190
4" x 2"	BAS420	180	INT420	165
4" x 3"	BAS430	165	INT430	130
5" x 1 1/2"	BAS515	140	INT515	140
5" x 2"	BAS520	130	INT520	130
5" x 3"	BAS530	110	INT530	100
6" x 1 1/2"	BAS615	120	INT615	120
6" x 2"	BAS620	115	INT620	100
6" x 3"	BAS630	90	INT630	75

(877) 803-1478



Box quantities subject to change

Standard Radius Bends



Standard Radius Bends	90° Bends			45° Bends	
	Radius (R)	Part Number	Standard Box Quantity	Part Number	Standard Box Quantity
1/2"	4.00"	40STD0590	40	40STD0545	100
3/4"	4.50"	40STD0790	40	40STD0745	50
1"	5.75"	40STD1090	50	40STD1045	50
1 1/4"	7.25"	40STD1290	25	40STD1245	30
1 1/2"	8.25"	40STD1590	20	40STD1545	30
2"	9.50"	40STD2090	15	40STD2045	20
2 1/2"	10.50"	40STD2590	1	40STD2545	20
3"	13.00"	40STD3090	1	40STD3045	15
3 1/2"	15.00"	40STD3590	1	40STD3545	9
4"	16.00"	40STD4090	1	40STD4045	1
5"	24.00"	40STD5090	1	40STD5045	1
6"	30.00"	40STD6090	1	40STD6045	1

Custom Sizes can be fabricated to order!

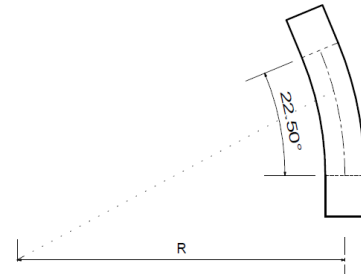
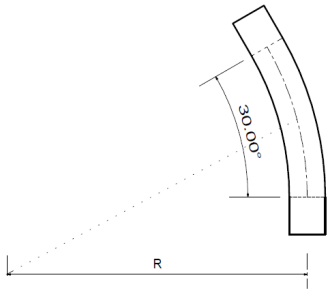
(877) 803-1478

Also available with one belled end, append B to part number, ex. 40STD2090B



Box quantities subject to change

Standard Radius Bends



Standard Radius Bends	30° Bends			22 1/2° Bends	
	Radius (R)	Part Number	Standard Box Quantity	Part Number	Standard Box Quantity
1/2"	4.00"	40STD0530	50	40STD0522	50
3/4"	4.50"	40STD0730	50	40STD0722	50
1"	5.75"	40STD1030	50	40STD1022	50
1 1/4"	7.25"	40STD1230	35	40STD1222	35
1 1/2"	8.25"	40STD1530	20	40STD1522	20
2"	9.50"	40STD2030	15	40STD2022	15
2 1/2"	10.50"	40STD2530	20	40STD2522	20
3"	13.00"	40STD3030	50	40STD3022	50
3 1/2"	15.00"	40STD3530	12	40STD3522	12
4"	16.00"	40STD4030	12	40STD4022	12
5"	24.00"	40STD5030	1	40STD5022	1
6"	30.00"	40STD6030	1	40STD6022	1

Custom Sizes can be fabricated to order!

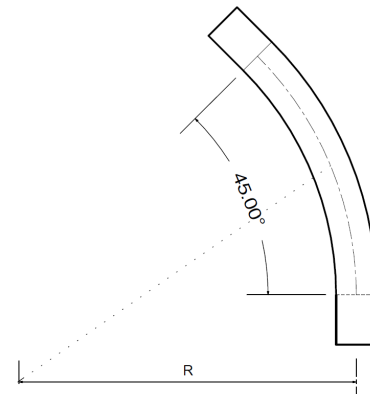
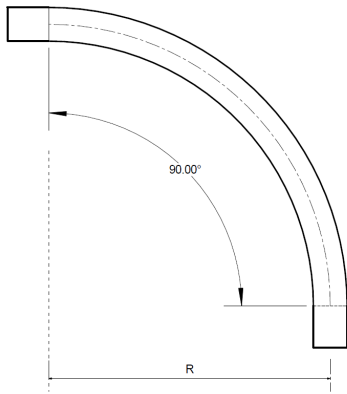
Also available with one belled end, append B to part number, ex. 40STD2090B

(877) 803-1478



Box quantities subject to change

Special Radius Bends



Special Radius Bends	90° x 24"R Sweeps	90° x 36"R Sweeps	90° x 48"R Sweeps	45° x 24"R Sweeps	45° x 36"R Sweeps	45° x 48"R Sweeps
	Part Number	Part Number	Part Number	Part Number	Part Number	Part Number
1"	40S109024	40S109036	40S109048	40S104524	40S104536	40S104548
1 1/4"	40S129024	40S129036	40S129048	40S124524	40S124536	40S124548
1 1/2"	40S159024	40S159036	40S159048	40S154524	40S154536	40S154548
2"	40S209024	40S209036	40S209048	40S204524	40S204536	40S204548
2 1/2"	40S259024	40S259036	40S259048	40S254524	40S254536	40S254548
3"	40S309024	40S309036	40S309048	40S304524	40S304536	40S304548
3 1/2"	40S359024	40S359036	40S359048	40S354524	40S354536	40S354548
4"	40S409024	40S409036	40S409048	40S404524	40S404536	40S404548
5"		40S509036	40S509048		40S504536	40S504548
6"		40S609036	40S609048		40S604536	40S604548

Custom Sizes can be fabricated to order!

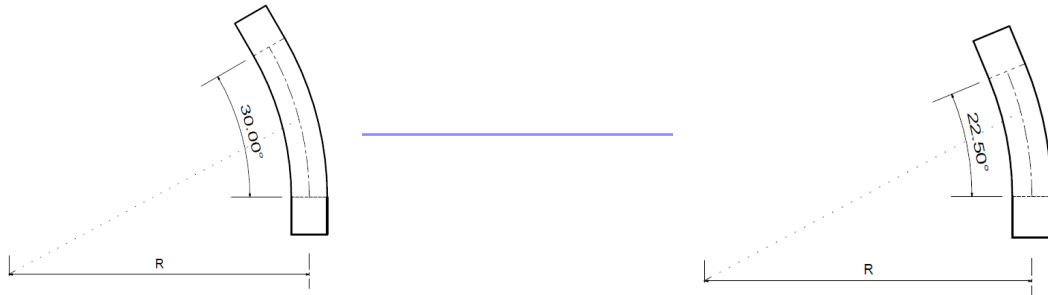
(877) 803-1478

Also available with one belled end, append B to part number, ex. 40S209036B



Box quantities subject to change

Special Radius Bends



Special Radius Bends	30° x 24"R Sweeps	30° x 36"R Sweeps	30° x 48"R Sweeps	22.5° x 24"R Sweeps	22.5° x 36"R Sweeps	22.5° x 48"R Sweeps
	Part Number	Part Number	Part Number	Part Number	Part Number	Part Number
1"	40S103024	40S103036	40S103048	40S102224	40S102236	40S102248
1 1/4"	40S123024	40S123036	40S123048	40S122224	40S122236	40S122248
1 1/2"	40S153024	40S153036	40S153048	40S152224	40S152236	40S152248
2"	40S203024	40S203036	40S203048	40S202224	40S202236	40S202248
2 1/2"	40S253024	40S253036	40S253048	40S252224	40S252236	40S252248
3"	40S303024	40S303036	40S303048	40S302224	40S302236	40S302248
3 1/2"	40S353024	40S353036	40S353048	40S352224	40S352236	40S352248
4"	40S403024	40S403036	40S403048	40S402224	40S402236	40S402248
5"		40S503036	40S503048		40S502236	40S502248
6"		40S603036	40S603048		40S602236	40S602248

Custom Sizes can be fabricated to order!

Also available with one belled end, append B to part number, ex. 40S209036B

(877) 803-1478



Box quantities subject to change

Cement & Primer



Cold Weather Cement

Cold Weather Cement	Part Number	Standard Box Quantity
Quart	CEMC20W	12
Gallon	CEMC40W	6

Low VOC Cement

Low VOC Cement	Part Number	Standard Box Quantity
1/2 Pint	CEMC05	24
Pint	CEMC10	12
Quart	CEMC20	12
Gallon	CEMC40	6

Low VOC Primer

Low VOC Primer	Part Number	Standard Box Quantity
1/2 Pint	PR0005	24
Pint	PR0010	12
Quart	PR0020	12
Gallon	PR0040	6

(877) 803-1478



Box quantities subject to change



(877) 803-1478